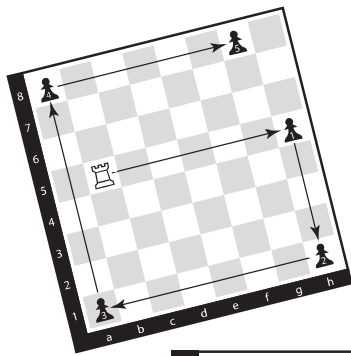


PAWN MOWER

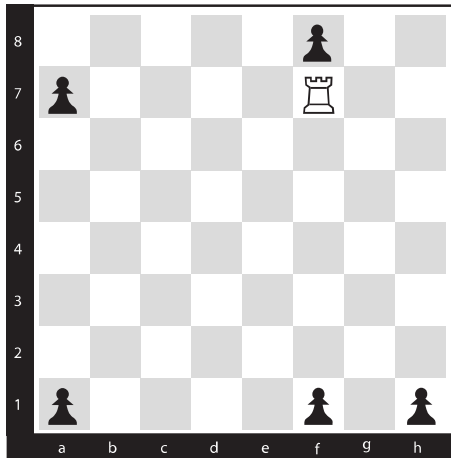
INSTRUCTIONS



Use the rook to eliminate all the pawns on the board. A rook moves vertically and horizontally. It can get rid of all five pawns by moving right, then down, then left, then up, and, finally, right. Five pawns, five moves. An efficient way to describe this is by writing the moves out like this:

h5 h1 a1 a8 g8

5

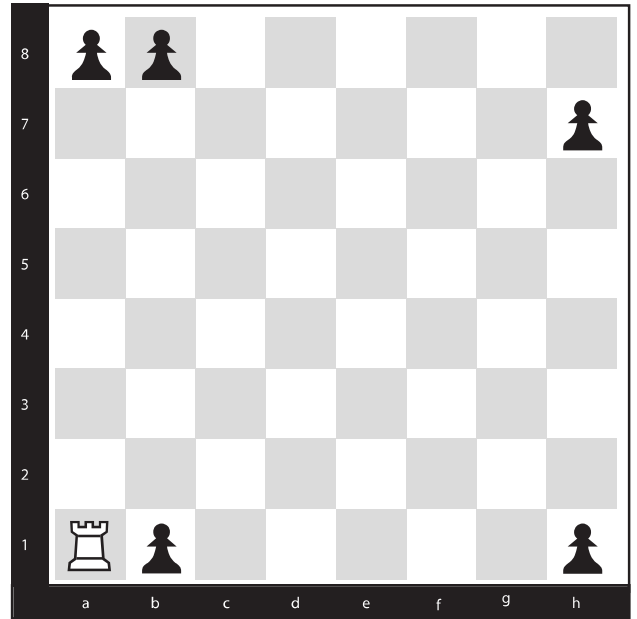


S
A
M
P
L
E

P
U
Z
Z
L
E
S

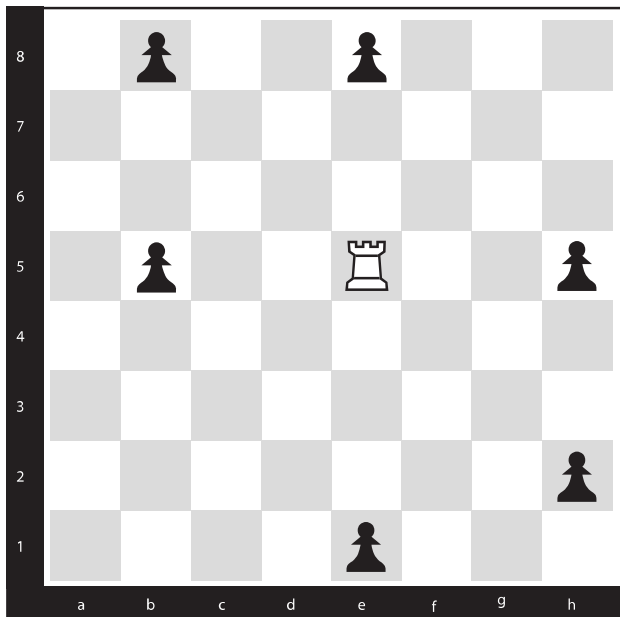
1. _____

5



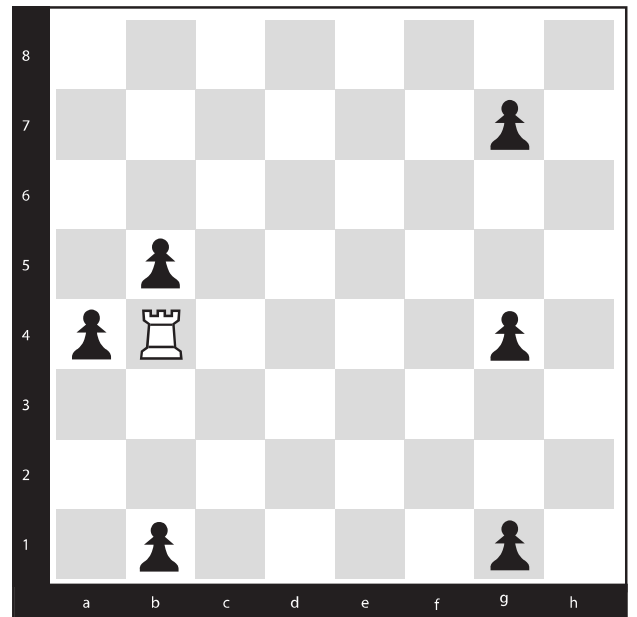
2. _____

6



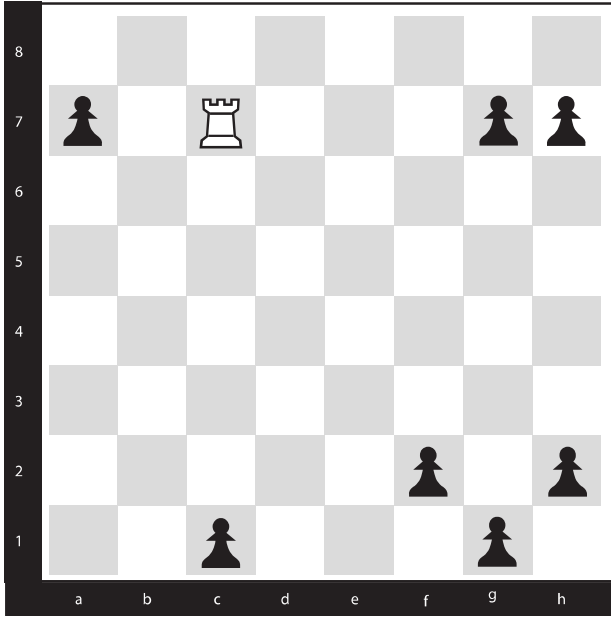
3. _____

6



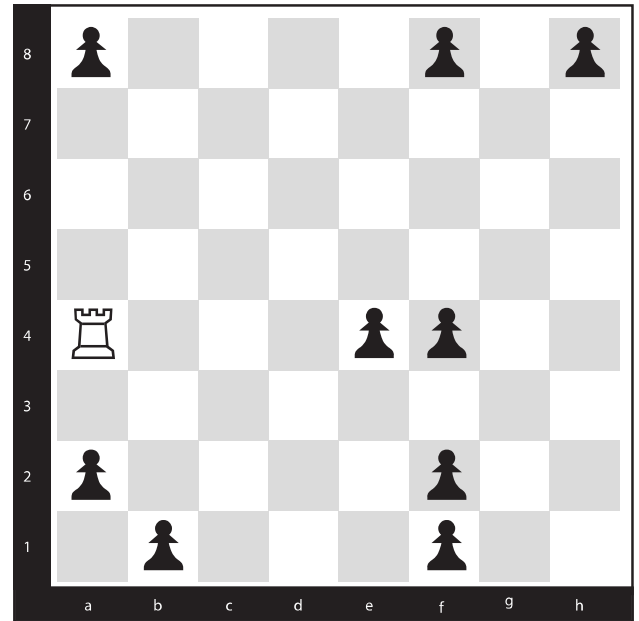
4. _____

 7



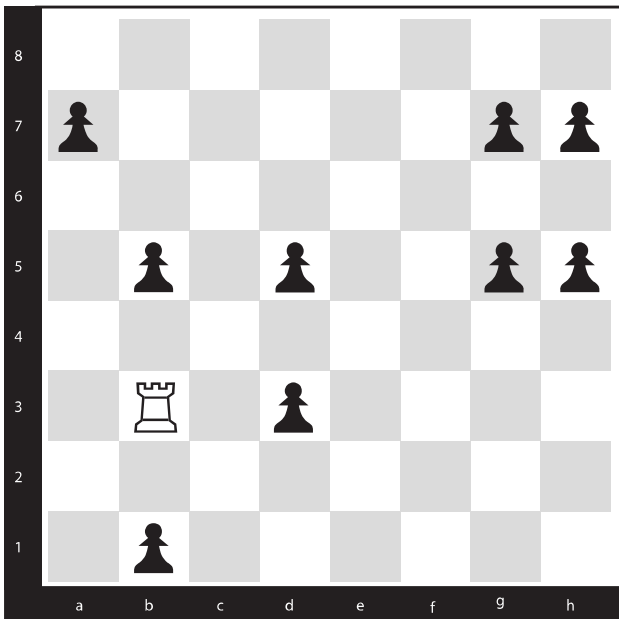
5. _____

 9



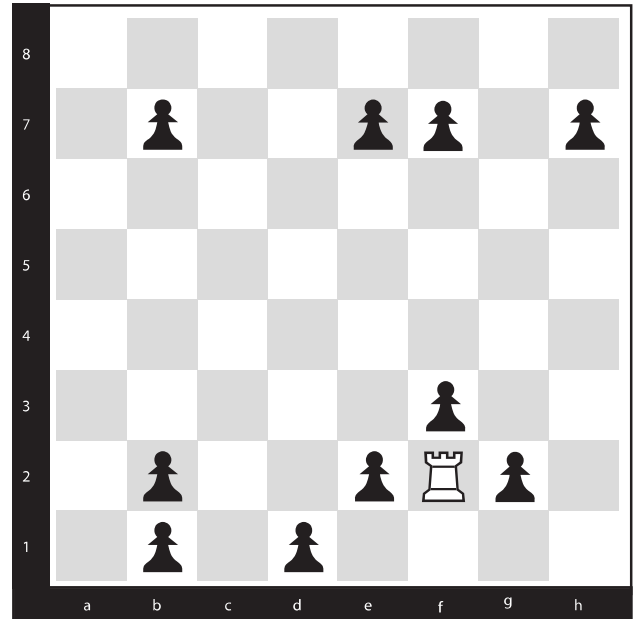
6. _____

 9



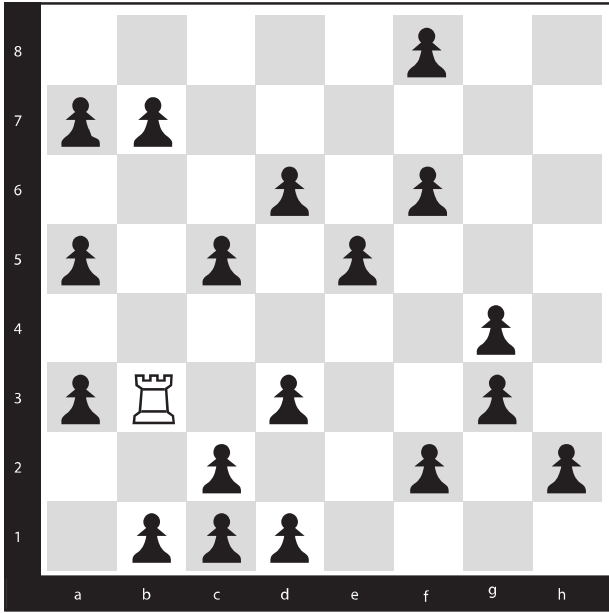
7. _____

 10



8. _____

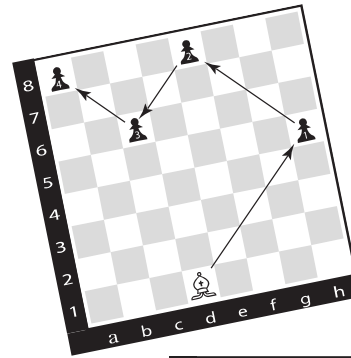
18



9. _____

PAWN MOWER

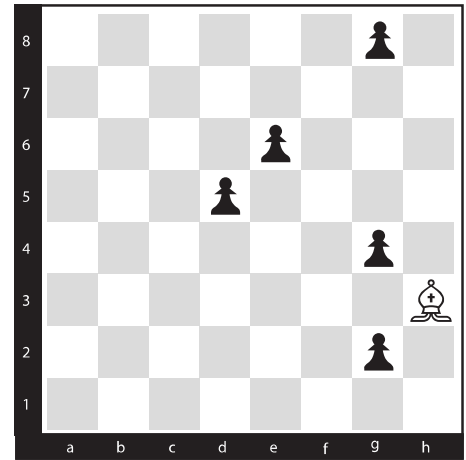
BISHOP INSTRUCTIONS



Use the bishop to eliminate all the pawns on the board. A bishop moves diagonally, in any direction. It can get rid of all four pawns by moving diagonally up and right, then down and left, and, finally, up and left. Four pawns, moves. An efficient way to describe this is by writing the moves out like this:

h5 e8 c6 a8

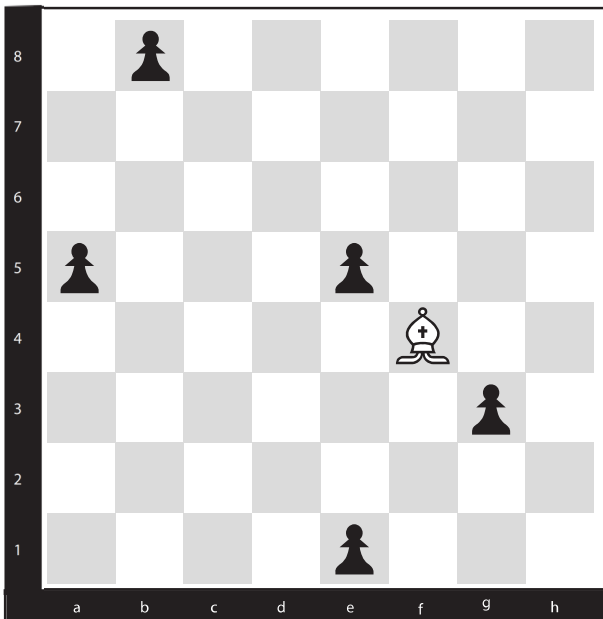
5



1. _____

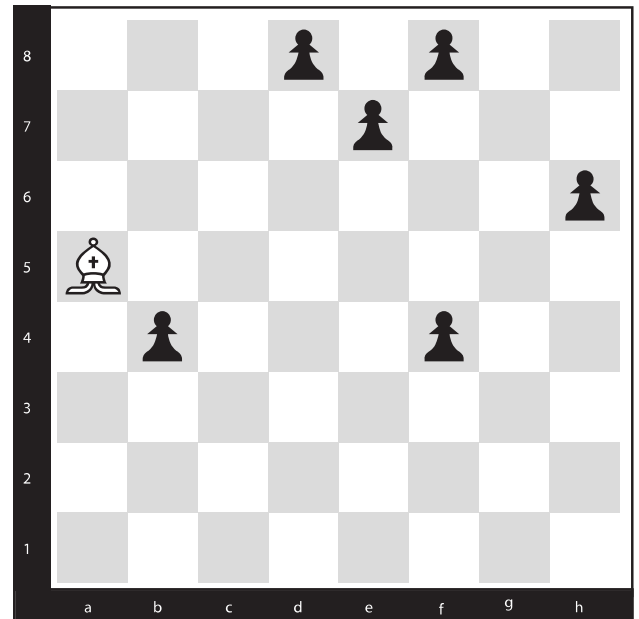
SAMPLE
PUZZLES

5



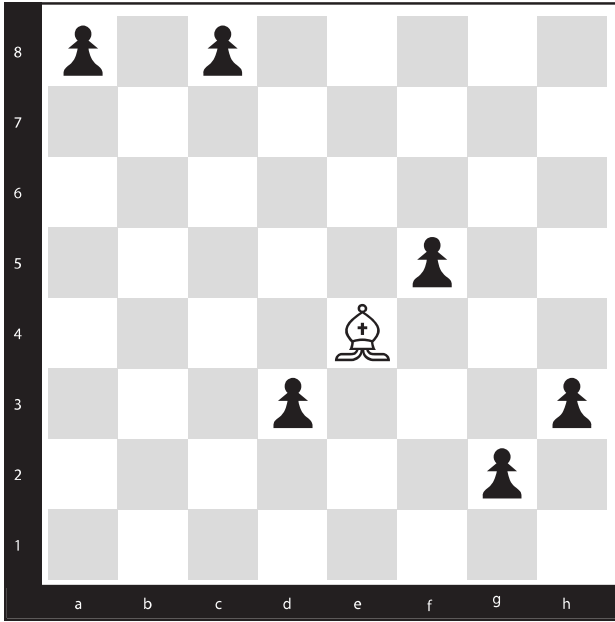
2. _____

6



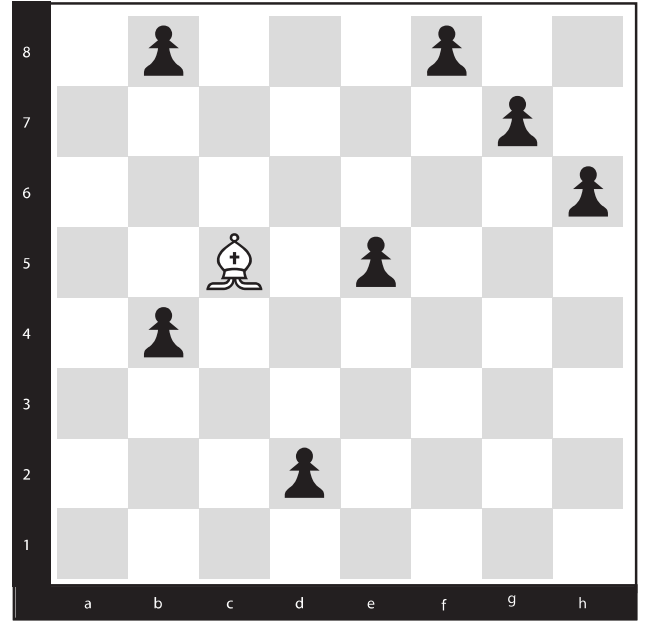
3. _____

 6



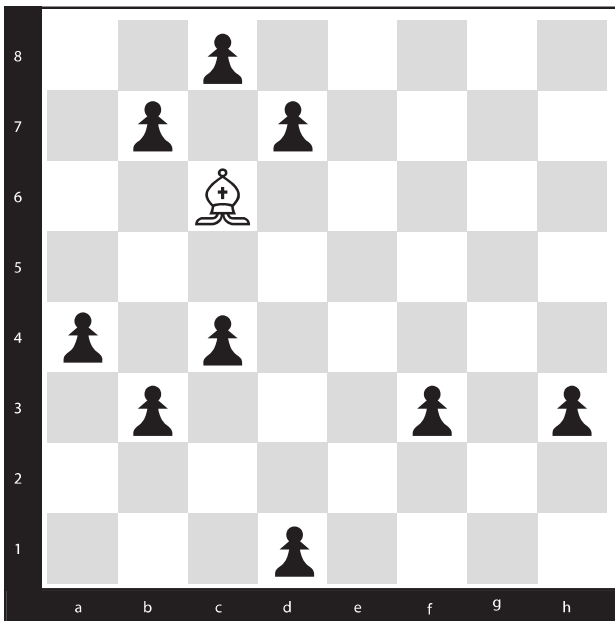
4. _____

 7



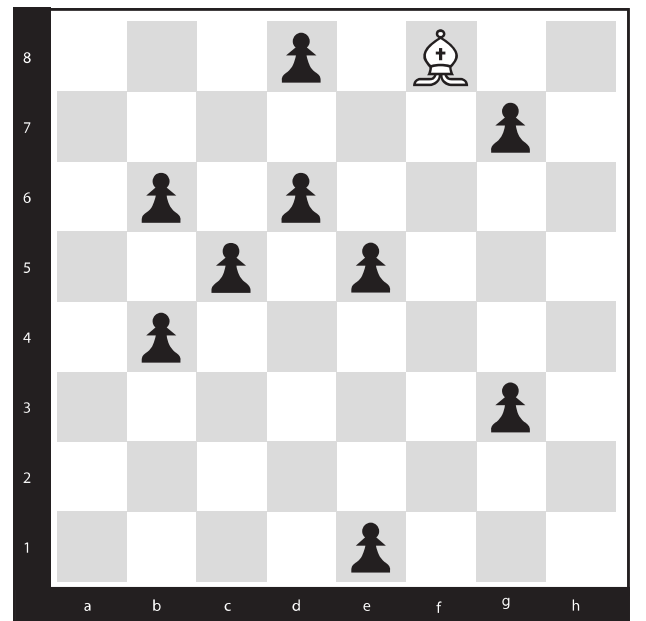
5. _____

 9



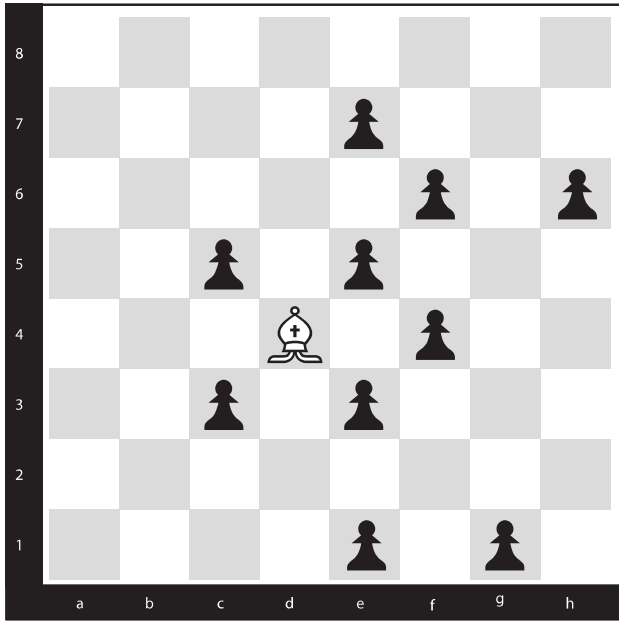
6. _____

 9



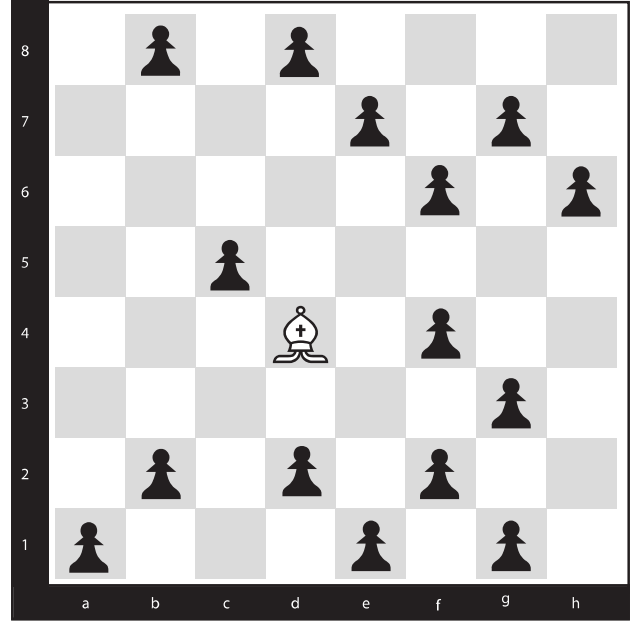
7. _____

10



8. _____

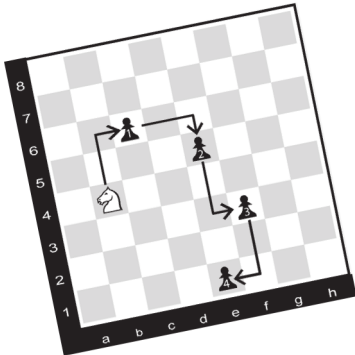
15



9. _____

PAWN MOWER

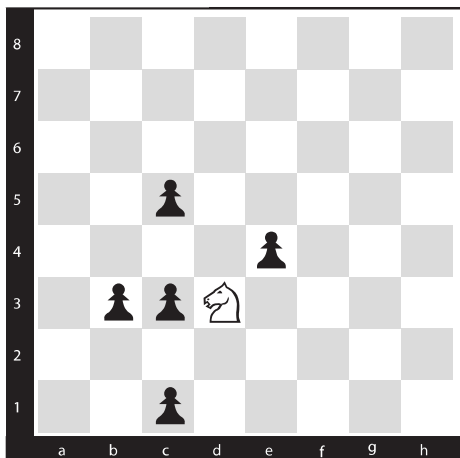
KNIGHT INSTRUCTIONS



Use the knight to eliminate all the pawns on the board. A knight moves in an 'L-shape' (2 spaces in one direction, 1 space in another) in any direction. It can get rid of all four pawns by moving up two spaces and to the right one space, to the right two spaces and down one, and, finally, down two and and to the left one space. Four pawns, four moves. An efficient way to describe this is by writing the moves out like this:

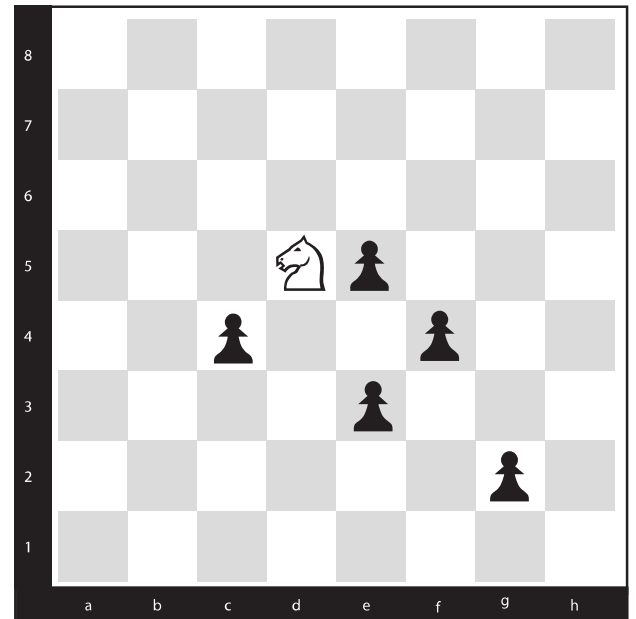
c6 e5 f3 e1

5



1. _____

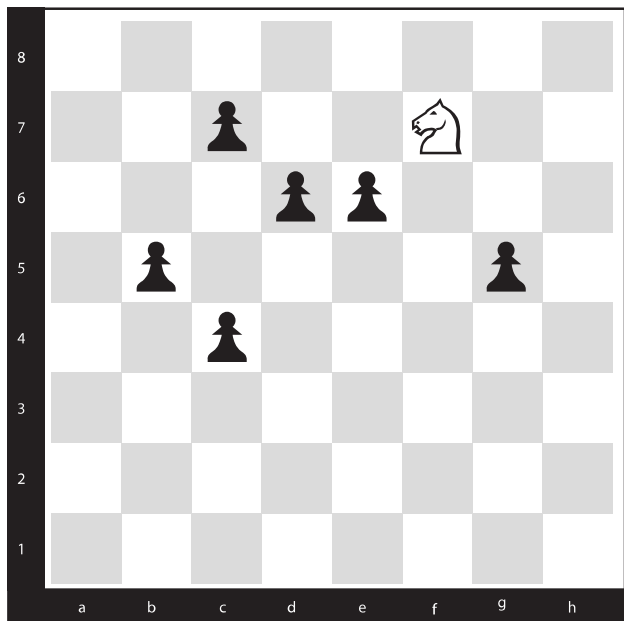
5



2. _____

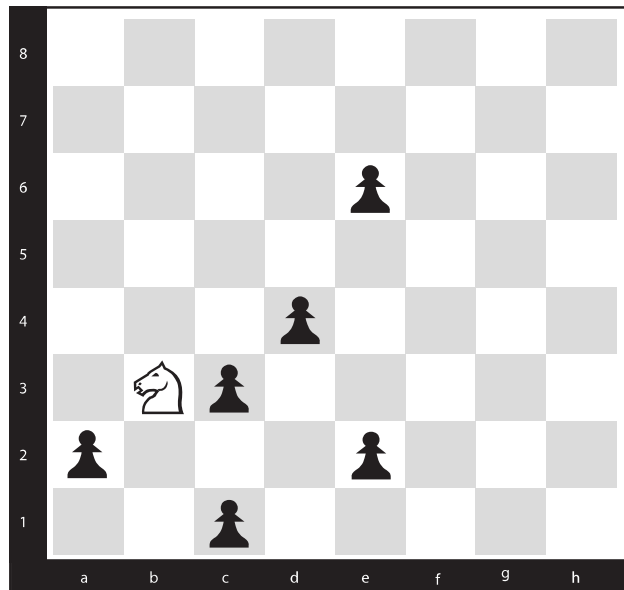
SAMPLE PUZZLES

6



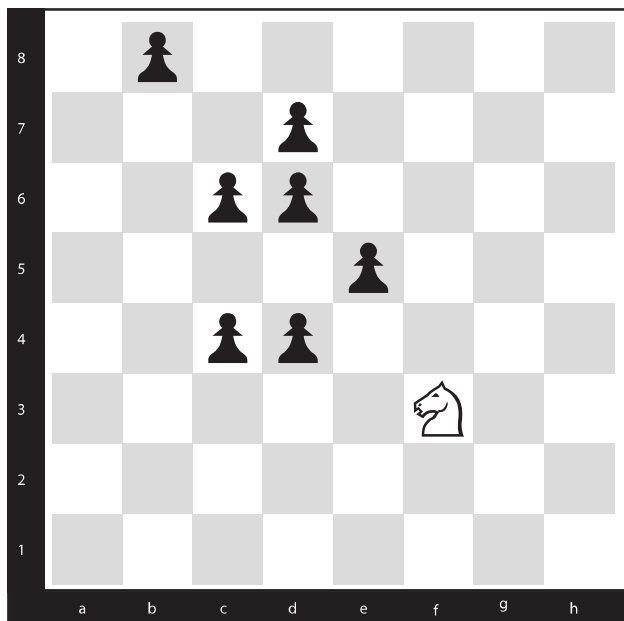
3. _____

6



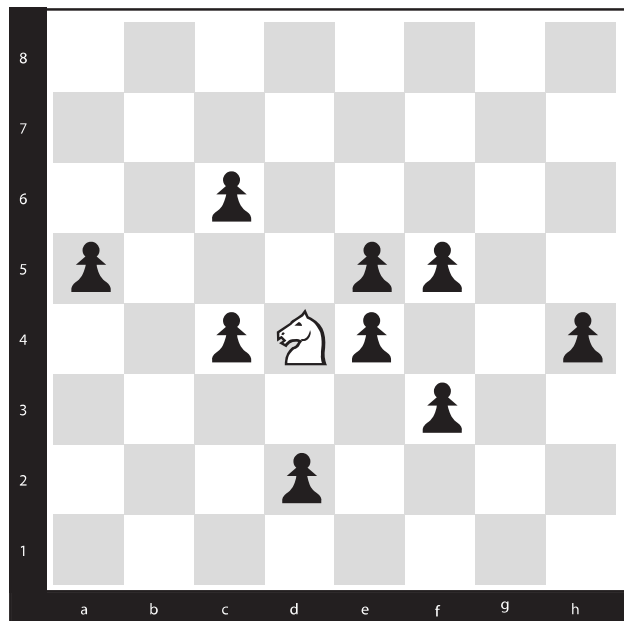
4. _____

7



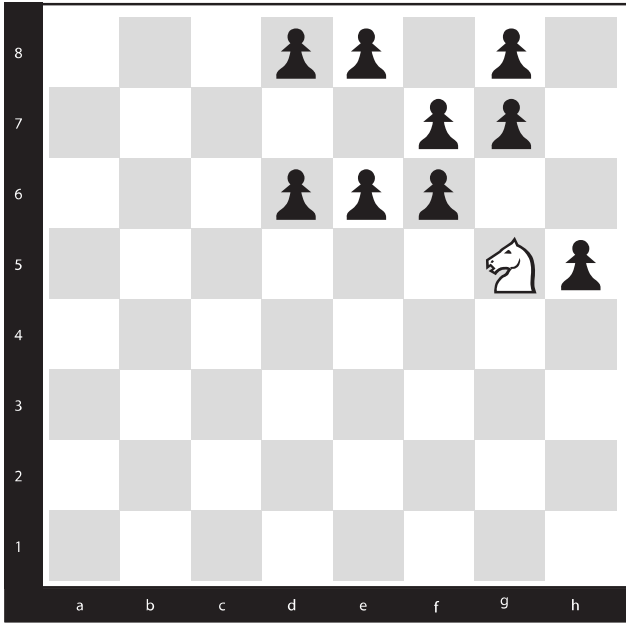
5. _____

9



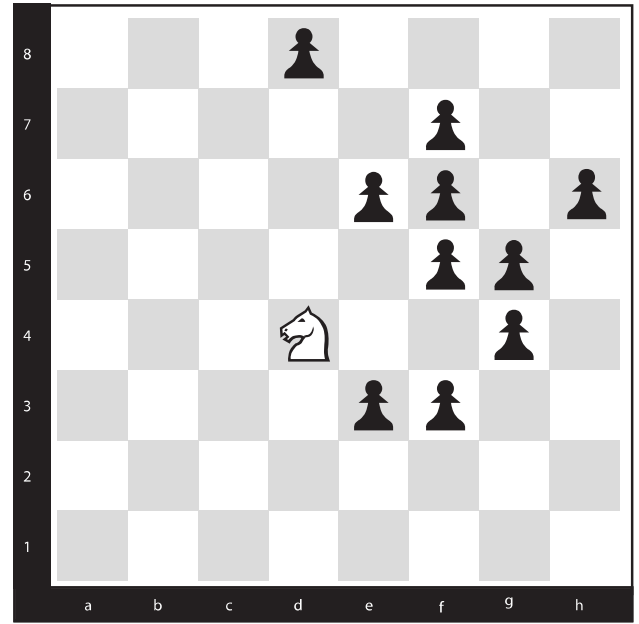
6. _____

9



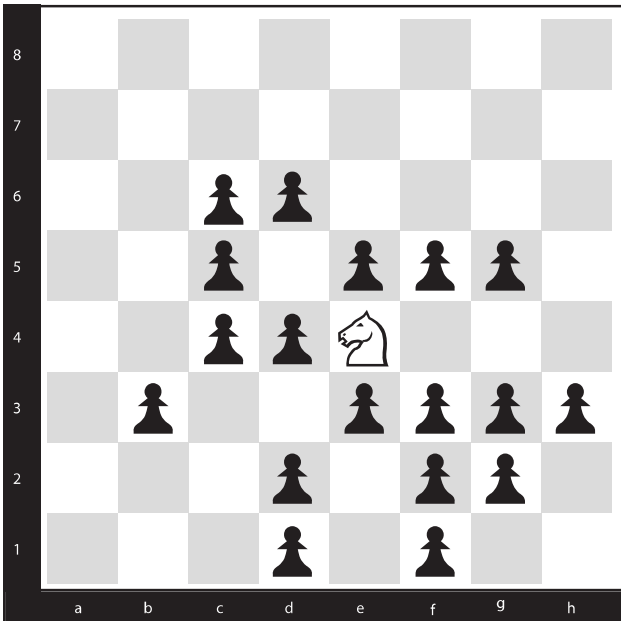
7. _____

10



8. _____

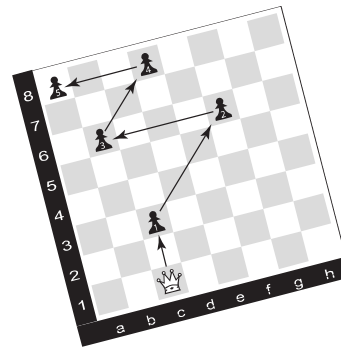
18



9. _____

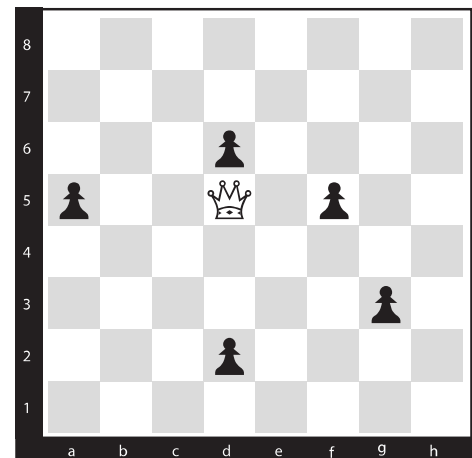
PAWN MOWER

QUEEN INSTRUCTIONS



Use the queen to eliminate all the pawns on the board. A queen moves horizontally, vertically, and diagonally, in any direction. It can get rid of all five pawns by moving up, then diagonally up and right, then left, then diagonally up and right, and finally, left. Five pawns, five moves. An efficient way to describe this is by writing the moves out like this: c3 f6 b6 d8 a8

5

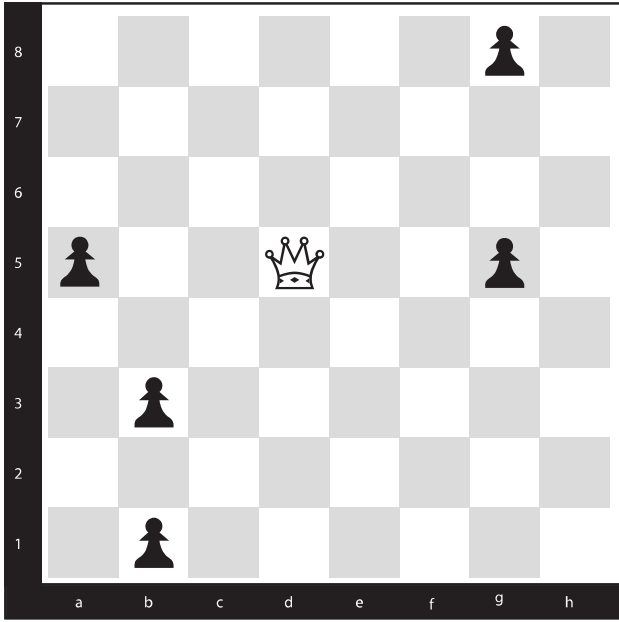


1. _____

S
A
M
P
L
E

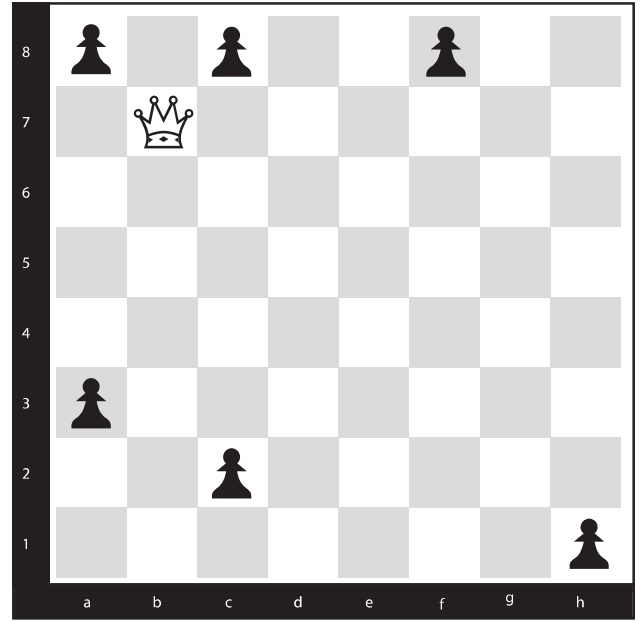
P
U
Z
Z
L
E
S

5



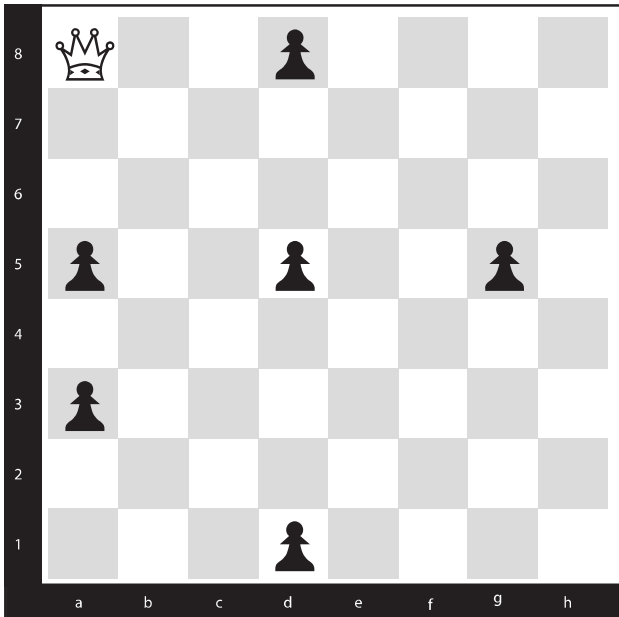
2. _____

6



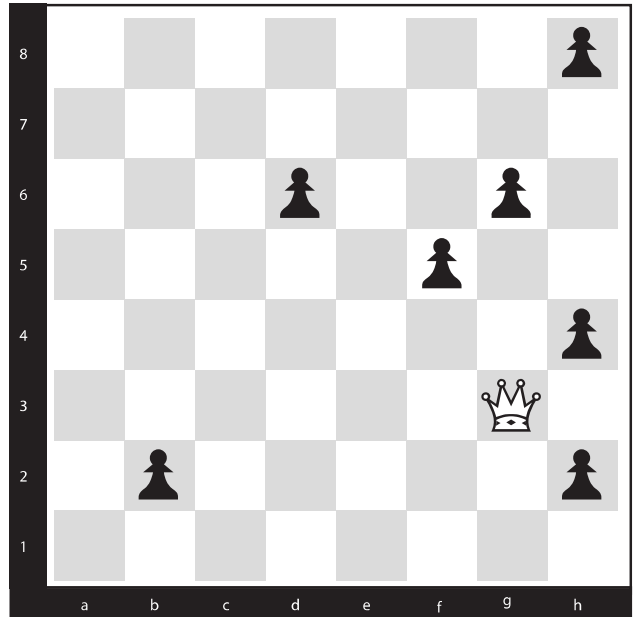
3. _____

6



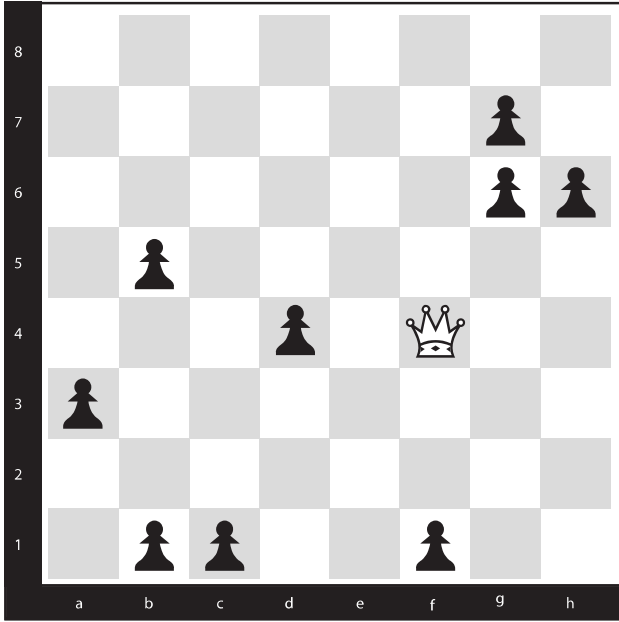
4. _____

7



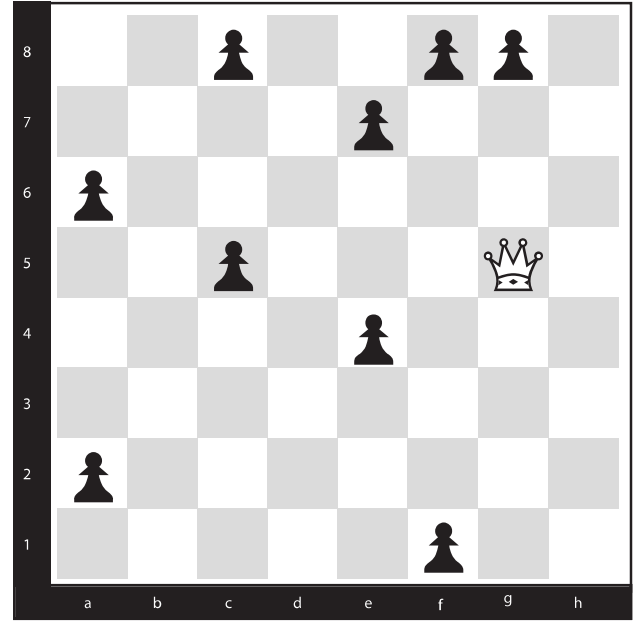
5. _____

9



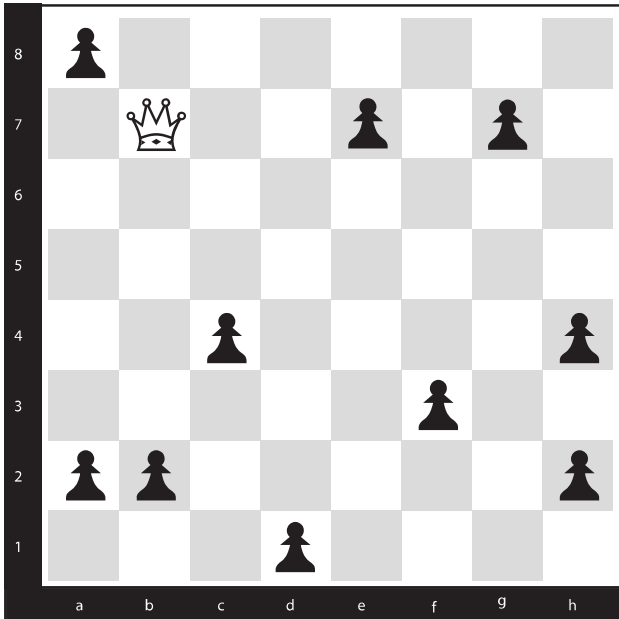
6. _____

9



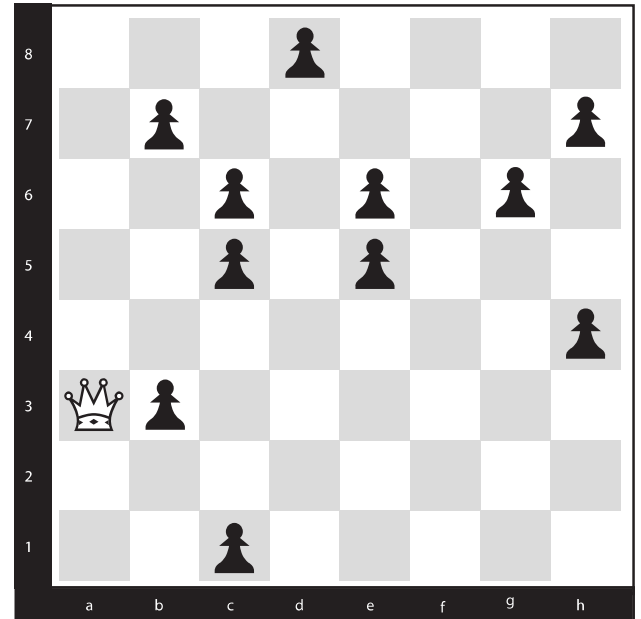
7. _____

10



8. _____

11



9. _____
